



Year in Review

May 2024 – April 2025

A Landmark Year

Thank you for another outstanding year at The Nelson-Atkins Museum of Art. This year marked the start of something extraordinary at the museum: an expansion and reimagining of our role in the community. We see the needs and wants of our community shifting, just as the way we live is changing. Your museum is more than just a space where masterpieces are preserved and exhibited. It is a place of joy, learning, socializing, and belonging where we provide exceptional art experiences for free, for everyone.

To better serve future generations, we asked architects from around the world for their ideas about how to build meaningful spaces that encourage community connections and visitor excitement. The New York firm, Weiss/Manfredi's vision for a west-side expansion and campus revitalization won the hearts and imagination of both our community members and Board of Trustees. The architectural competition highlighted Kansas Citian's museum pride and affection for the Sculpture Park. We are thankful for, and delighted by, the hundreds of comments and letters from our visitors. Learning what makes the museum special to you was one of our greatest joys.

This year we welcomed more than 550,000 visitors to explore our galleries, discover remarkable exhibitions, and attend programs and festivals with friends and family. Of those, more than 60,000 were students who explored our collection on a school tour or created artwork in our classrooms. We are deeply grateful for the members, donors, foundations, and corporate partners whose generosity helps keep our museum free.

Let's not forget the art and our incredible special exhibitions! The museum hosted our most popular exhibition ever, *Hokusai: Waves of Inspiration* from the Museum of Fine Arts, Boston, and welcomed

back our penguin friends from The Kansas City Zoo & Aquarium so they could see *Survival of the Fittest*, our first exhibition focused on wildlife art. The KC Art Now series continued to highlight the work of some of Kansas City's own amazing artists. Powerful works by 2024 Charlotte Street Visual Award Artists Juan Diego Gaucin, Aleah Washington, and Kevin Demery invited guests to experience the best of Kansas City's creative community.

Additionally, we celebrated the complete launch of the digital Starr Collection of Portrait Miniatures. Featuring more than 250 pocket-sized paintings drawn from the collection of Martha Jane Phillips Starr and John W. Starr, this catalogue marks a significant milestone in the scholarly work of our curators.

Our achievements from this past year are thanks to the incredible support of our donors, volunteers, and members. Thank you for being the Art & Soul of the Nelson-Atkins.

We hope to see you in the galleries soon!

With deepest gratitude,

Evelyn Craft Belger

Chair, Board of Trustees

Julián Zugazagoitia

Director & CEO



Lunar New Year Festival

Contents

02	Executive Letter
04	Learning and Community Engagement
08	Art
15	Amenities and Guest Services
16	Fundraisers
18	In Memoriam: Donald J. Hall
20	Museum Financials
21	Membership
22	William Rockhill Nelson Society
23	Society of Fellows
30	Business Council
32	A Glimpse Ahead

Cover: Young guest paging through the exhibition catalogue in *Hokusai: Waves of Inspiration* from the Museum of Fine Arts, Boston

Learning and Community Engagement



Celebrating volunteers

Every April, we celebrate our volunteers with Volunteer Appreciation Month. Last year, more than 400 volunteers contributed over 37,000 hours to welcome, educate, and foster belonging for every Nelson-Atkins guest. Now that's a reason to celebrate!

Aging creatively

With support from E.A. Michelson Philanthropy, the Nelson-Atkins offers Creative Aging Workshops for people 55 years and up. The benefits of Creative Aging Workshops were highlighted in a CBS Sunday Morning segment featuring activists Jane Fonda and Ashton Applewhite.



Remixing the museum experience

Last May, we kicked off Night/Shift, a free and free-form evening hosted multiple times a year. Featuring art demonstrations, live performances, and gallery experiences, Night/Shift presents new ways to engage with Kansas City's creative community — and has proven a hit among guests.

Big ticket, small price

Thanks to a partnership with TeenTix KC, teenagers from the Kansas City area can now enjoy \$5 admission to special exhibitions and other programming at the Nelson-Atkins.

Tomorrow's art stewards

Children who have attended the museum on a grant-funded school trip or participated in Thinking Through Art programs are encouraged to return with their families for Family Field Trip Night. This spring, the popular event debuted the Art Rangers initiative, which empowers young people to protect art around the museum.

Clockwise from left: Día de los Muertos Festival; Volunteer; Night/Shift



From left to right: Kansas City Lawn Party; A social media sensation; Parade of Hearts

Bringing the world to KC

The museum’s annual cultural festivals continue to be community favorites. Combined, the Lunar New Year Festival, Passport to India, the Native American Cultural Festival, the Juneteenth Celebration, Kansas City’s Lawn Party, the Deaf Cultural Festival, and Día de los Muertos brought more than 35,000 people to the museum.

Bottoms up

For a few weeks this winter, local artist Zeke Henry (and his collaborators) were in competition with the likes of Caravaggio and Monet for greatest Nelson-Atkins attraction. His massive snow sculpture of a human posterior on the museum’s south lawn was a selfie magnet and social media sensation.

Dragon with a heart of gold

The Nelson-Atkins hosted the 2024 Parade of Hearts sculpture Guardian of the Heartland, created by the superb multimedia artist (and museum staff member!) Adrean Painter. The sculpture pays homage to the more than 600 dragons depicted in art from the museum’s collection.



Thank you to our festival sponsors and partners who help bring fresh perspectives to our festivals

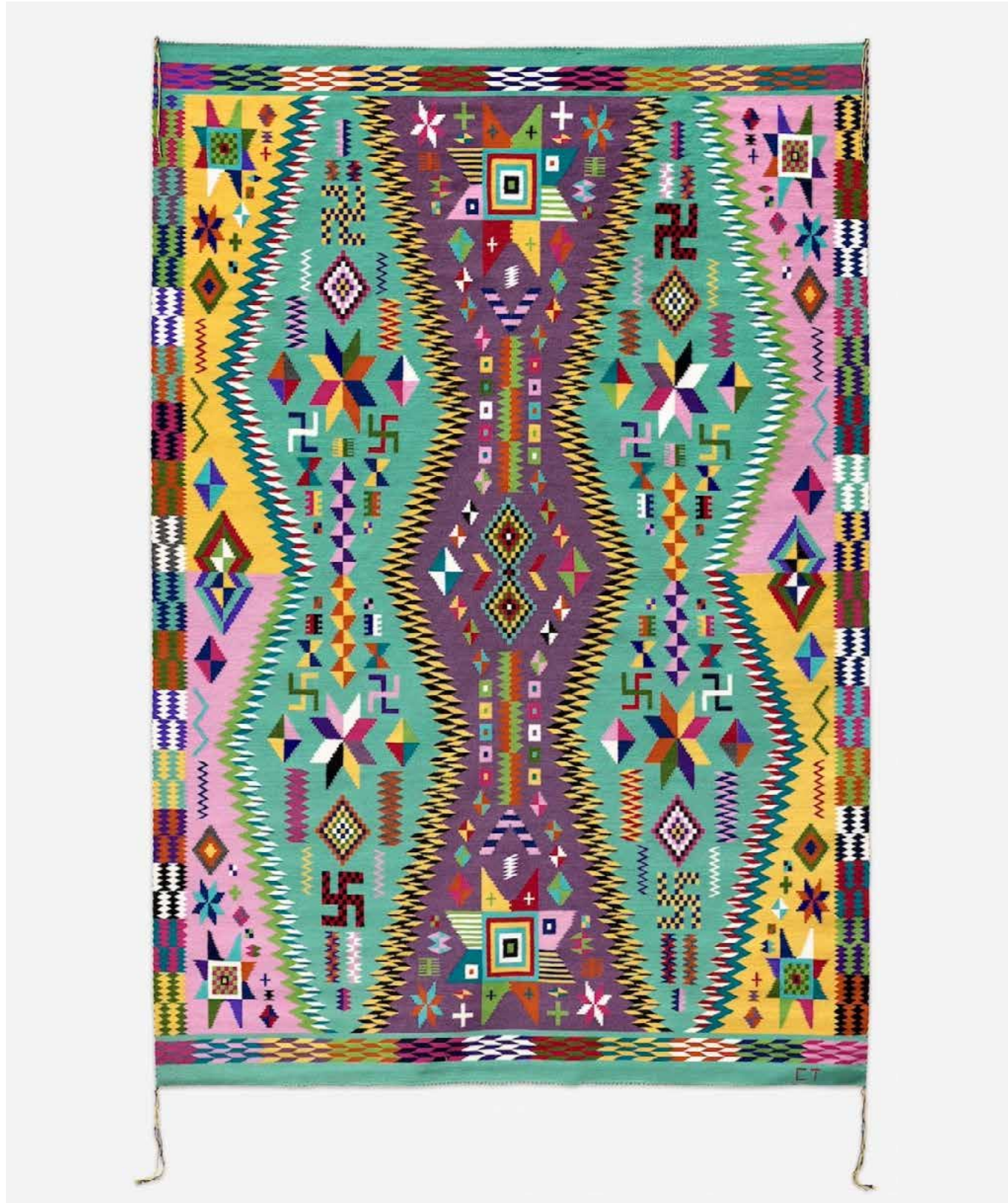
Sponsors

- Hall Family Foundation
- Hallmark Cards, Inc.
- Lilly Endowment Inc.
- W.K. Kellogg Foundation Trustee Donor Advised Fund – Ramón Murguía, Trustee

Community partners

- The Chinese School of Greater Kansas City
- Consulate of Mexico in Kansas City
- Guadalupe Centers High School Impact Academy
- The India Association of Kansas City

- Institute of Chinese Language and Culture
- Juneteenth KC
- Kansas City Indian Center
- Kansas City Parks & Recreation
- Kansas City Public Library
- Kansas School for the Deaf
- Korean-American Society of Greater Kansas City
- Mattie Rhodes Cultural Center
- The Museum of Deaf History, Arts & Culture
- Taiwan-America Friendship Association
- The Whole Person



A Spectacular Year for Art

The cornerstone of a museum is its art collection. This year, the Nelson-Atkins' dynamic team of curators made spectacular additions to our holdings.

This year we added 455 works of art in all mediums and curatorial departments—a few highlights—a beautiful portrait by Joshua Johnson (about 1763–1830), the second earliest-documented US artist of African heritage, made an important addition to our American paintings. A casket and related stand attributed to André Charles Boulle (1642–1732), the legendary French designer, boosted our European furniture. A powerful portrait of an unknown Black boy in livery by an 18th-Century English artist enriched our European paintings. A major portfolio of photographs by Joel Sternfeld (born 1944) will help celebrate the 250th anniversary of the U.S. in 2026. An

important painting by Hung Hsien (born 1933) helped boost our contemporary Chinese art by women artists.

We also acquired a mixed-media assemblage costume and performance documentation by the inventive collective Kongo Astronauts, based in the Democratic Republic of Congo. The Japanese department now has one of the earliest sculptures in its collection, a Haniwa Head dating from the 4th–5th centuries CE. A major gift of art and artifacts documenting Christo (1935–2020) and Jeanne-Claude's (1935–2009) 1978 *Wrapped Walk Ways* project in Loose Park celebrates a transformative moment in our city's contemporary art history and is the subject of current and future exhibitions.

Installations by Gonkar Gyatso (born 1961) and Farhad Ostovani (born 1950) invigorate our contemporary South and Southeast Asian collections, while the gift of a complete tomb cycle by Siah Armajani (1939–2020) similarly shines an in-depth look at an artist's vision from conception to completion. A vibrant contemporary weaving by Diné artist Calvin Toney (born 1987) enriches the museum's important collection of Native American textiles.

All these acquisitions were made possible by our extraordinary donors, who either gave works of art or provided acquisition funds for purchases. We thank them most sincerely for helping ensure that the Nelson-Atkins art collections continue to be an ever-evolving source of inspiration, impact, wellness, and education — now and in decades to come.

William Keyse Rudolph

William Keyse Rudolph, PhD

Deputy Director, Curatorial Affairs

Chief Curator and Head, Architecture, Design and Decorative Arts



Left: Calvin Toney (Diné (Navajo), born 1987). *Untitled*, 2020–2021. Aniline dyed wool; overall: 105 1/2 x 73 1/4 inches. Purchase: acquired through the generosity of the Jedel Family Foundation, 2024.40.

Right: Hung Hsien (Chinese, born 1933). *Ocean Rocks*, 1970. Hanging scroll; ink and color on paper; image: 52 3/16 x 30 9/16 inches. Purchase: the Asian Art Acquisition Fund in memory of Laurence Sickman, 2024.41.



From left to right: Special visitors to *Survival of the Fittest*; Felix Gonzalez-Torres (Cuban, 1957–1996). *Untitled (March 5th) #2*, 1991. 40-watt light bulbs, porcelain light sockets, and extension cords; installation height: 113 inches. Purchase: acquired through the generosity of the William T. Kemper Foundation—Commerce Bank, Trustee, 2005.4 ; A guest enjoys the final weekend of the *Hokusai* exhibition; *Starr Minis* pack a major punch



A foundational first

The KC Art Now series returned with three powerful exhibitions by 2024 Charlotte Street Visual Artist fellows Kevin Demery, Juan Diego Gaucin, and Aleah Washington. This was the first time the Nelson-Atkins hosted presentations of the Charlotte Street Foundation’s prestigious awards.

No small feat

The digital Starr Collection of Portrait Miniatures celebrated its final launch of entries this spring. Drawn from the collection Kansas City philanthropists Jane Phillips Starr and John W. Starr gifted to the museum, the catalogue brings to life more than 250 pocket-size paintings through deep scholarship and high-resolution images. Several of these works are showcased in the exhibition *John Smart: Virtuoso in Miniature*.

Arctic art lovers

The Kansas City Zoo & Aquarium’s penguins made their long-awaited return to the Nelson-Atkins since their popular visit in 2020. Their long waddle was worth it to see the wildlife art in *Survival of the Fittest*.

Hometown heroes

Gallery 214 in the Nelson-Atkins building hosted multiple exhibitions related to Kansas City. *Our Town* chronicled iconic views of the City of Fountains. *The Lawrence Lithography Workshop: Highlights from the Archive* celebrated a foundational gift by Richard Belger and Evelyn Craft Belger and the John and Maxine Belger Foundation (later amplified by a significant purchase) that resulted in the acquisition of lithographs from local printer Michael Sims. *Wrapped Walk Ways* recollects Christo and Jeanne-Claude’s 1978 “wrapping” of Loose Park, in anticipation of the installation’s 50th anniversary.

Depth of field

Collection exhibitions continued to showcase the remarkable breadth and depth of the museum’s photography collection, bolstered by generous contributions from the Hall Family Foundation. *Still Performing* spotlighted the high drama of the medium’s early years. *Strange and Familiar Places*’ contemporary photography tells compelling stories about people in the rural U.S. and the lands they inhabit.

Extra-special exhibitions

Special exhibitions drew new and established crowds to the Nelson-Atkins. *Hokusai: Waves of Inspiration* was a high-water mark, drawing national attention and smashing attendance projections. *Survival of the Fittest*, the museum’s first presentation of wildlife art, proved a community favorite.

To conserve and protect

Two mainstays of the Donald J. Hall Sculpture Park received vital conservation efforts. A generous grant from Bank of America funded repairs, protective coatings, and other treatments for Ursula von Rydingsvard’s *Three Bowls*. And the Richard J. Stern Foundation for the Arts funded cleaning, repainting, and structural reinforcement of one of Claes Oldenburg and Coosje Van Bruggen’s iconic *Shuttlecocks*.

Burning brief and bright

In December, one of the two lightbulbs in Felix Gonzalez-Torres’ *Untitled (March 5th) #2* burnt out. Commemorating the artist’s partner who died of AIDS in 1991, the work suggests a pair of lovers — one of whom will extinguish before the other. The powerful image was shared widely on social media and news outlets.



Hank Willis Thomas (American, born 1976). *Until Ex parte Endo (Part 1)*, 2024. Inkjet print and applied media on retroreflective vinyl mounted on Dibond and decommissioned US flag. Overall: 79 × 61 3/4 × 7 1/2 inches. The Nelson-Atkins Museum of Art, Kansas City, Missouri. Purchase acquired through the generosity of Ann Baum, Carol Hudson, Jackie Reses, Maurice Watson, Sandra and Willie Lawrence, Ward and Donna Katz, Gary and Debby Ballard, Irvin and Pamela Bishop, Devin W. Blackburn, Esq., Valerie Chow and Jon Gray, Mark and Gaye Cohen, Thomas Cohen and Lena Price, Paul and Bunni Copaken, Erica and Lorin Crenshaw, Stephen Figge, Daniel and Kristen Fromm, Bill and Christy Gautreaux, Jeffrey Goldstein and Kim Klein, Laura Greenbaum, John and Sharon Hoffman, Damian Lair, Eleanor and David Lisbon, Stephen and Mary Anne McDowell, Sheryll Myers, Kim and Nikki Newton, Barbara Nicely, Walter and Jon Porter, Rob and Doris Rogers, Heather and Clint Slusher, Matthew and Mandi Strange, Oscar and Ratana Tshibanda, Michael and Jamila Weaver, Jerry and Debbie Williams, Andy and Toma Wolff, Lynn Hoffman Carlton and Matt Hoffman, and an anonymous donor, 2025.36.1,2.



Above: *Mapping the Heavens* explored connections between scholars and scientists; Below: Cheech Marin, inaugural guest on Art Bytes

The art of conversation

Last year, the Nelson-Atkins debuted its second podcast production, Art Bytes. Hosted by Nelson-Atkins manager of media relations & production Kathleen Leighton, the show presents casual, compact conversations with art professionals like Cheech Marin about the past, present, and future of the art world.

Lending library

Partnerships with Linda Hall Library produced exciting new art experiences. The free exhibition *Mapping the Heavens* was co-organized with the library and featured stellar objects from its collection. The special exhibition *Survival of the Fittest* featured the library's original edition of Charles Darwin's seminal *On the Origin of Species*.

Art in a new light

Society of Fellows and Kansas City Friends of Alvin Ailey members enjoyed a behind-the-scenes visit to the Brooklyn studio of artist Hank Willis Thomas, where he shared the striking work in progress *Until Ex parte Endo (Part 1)*. Featuring an upside-down flag over a ghostly photograph, the work comments on the unjust mass incarceration of Japanese Americans during World War II. Shining light on the image reveals students saying the Pledge of Allegiance. John and Sharon Hoffman rallied support from 61 patrons to purchase the work on behalf of the Nelson-Atkins, where it went on view in fall 2025.





Strange and Familiar Places explored regional identity through storytelling

Thank you to our exhibition sponsors who help bring art from around the world to Kansas City

- The Alan and Judy Kosloff Fund
- Evelyn Craft Belger and Richard Belger
- Owen and Lynne Buckley
- Campbell/Calvin Fund for Exhibitions
- Susan Chambers
- Paul DeBruce and Linda Woodsmall-DeBruce
- E. Rhodes and Leona B. Carpenter Foundation
- J. Scott Francis and Susan Gordon
- Francis Family Foundation
- G. Kenneth and Ann Baum Philanthropic Fund
- Nancy and Rick Green
- Don Hall Jr.
- Hallmark Cards, Inc.
- Shirley Bush Helzberg
- Henry & Marion Bloch Foundation Fund
- Husch Blackwell
- JE Dunn Construction
- Neil Karbank and Gretchen Calhoun
- Marion and Henry Bloch Family Foundation
- Stephen and Mary Anne McDowell
- Sara and Bill Morgan
- Muriel McBrien Kauffman Family Foundation
- Richard J. Stern Foundations for the Arts—Commerce Bank, Trustee
- Kent Sunderland

Amenities and Guest Services

A vow to wow

The Nelson-Atkins has seen consistent growth from externally hosted events, particularly weddings. The museum’s remarkable spaces and talented events team make our institution one of Kansas City’s premier wedding venues.

Hokusai mania

Guests came in waves to see last year’s Hokusai exhibition. This popularity extended to the Nelson-Atkins Museum Store, which realized more than six times

its projected revenue from the exhibition’s supporting merchandise (and with special thanks to the store’s tireless team).

Movies at the museum

Tivoli Cinema lit up silver screens inside and out. Atkins Auditorium showed a run of successful films, including the museum’s first presentation of Studio Ghibli features. Outdoors, Tivoli Under the Stars proved extremely popular — despite the best efforts of inclement summer weather.



Tivoli Under the Stars attracts guests of all ages

Fundraisers



C100 Luncheon
The Committee of 100 is responsible for one of the museum's signature fundraisers, the flagship C100 Luncheon. The 2024 luncheon, which featured architect Stan Dixon, raised more than \$340,000 in support for the museum's programs and collection.

ShuttleCork 2025
Renowned vintners and chefs united in support of the Nelson-Atkins, offering fabulous dinners, unique auction items and experiences, for more than 500 guests. This year, participants raised a record-breaking \$2.4 million in support of art education, making ShuttleCork the museum's most successful event ever.

Party Arty: Opulence and Intrigue
Voted the best fundraiser in the city by KC Mag, the annual Young Friends of Art fundraiser supports art education in our community and raised nearly \$145,000.

Clockwise from left: A guest leans into the opulence of Party Arty; The C100 Benefactor Party; The festive ShuttleCork atmosphere



In Memoriam: Donald J. Hall

May 4, 1928–Oct. 15, 2024

The Nelson-Atkins Museum of Art mourns the loss of Donald J. Hall, a visionary business and civic leader whose decades of support shaped Kansas City's cultural landscape and the museum.

Serving as a member of the Nelson-Atkins Board of Trustees for 31 years, Hall's influence modernized Nelson-Atkins governance and broadened the Board from three members to 21. Hall funded the building of the roof over Rozzelle Court — thereby helping to establish the court's restaurant service — and oversaw the design team for the sculpture park later rechristened in his honor. He was also instrumental in the design and architect selection for the Bloch Building expansion, for which his wife Adele led the fundraising.

Don saw the importance of photography as an art form and began building the Hallmark Photographic Collection in 1964. He grew it into a world-class collection that

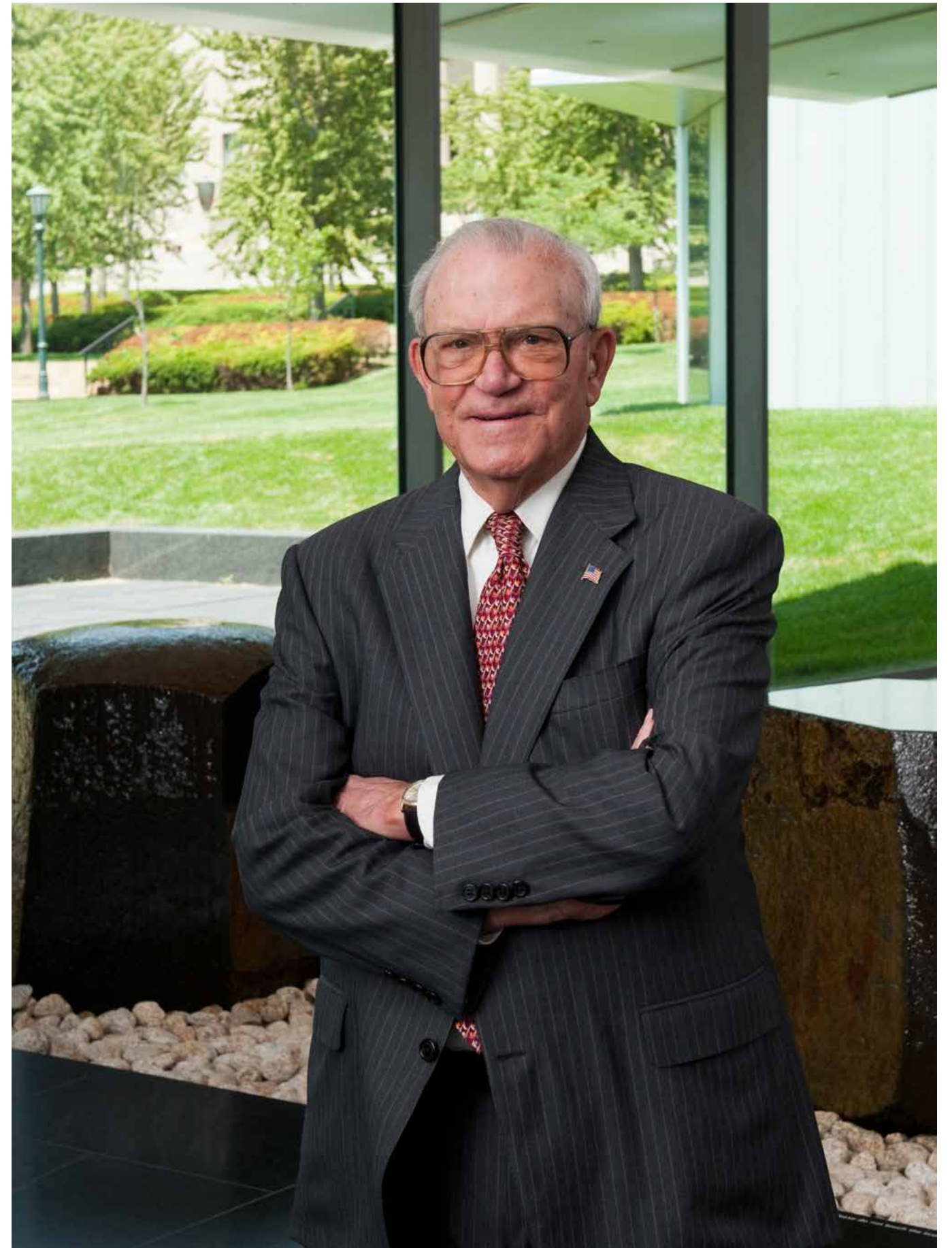
consisted of more than 6,500 works by 900 artists by the time it entered the Nelson-Atkins collection in 2005. This significant acquisition immediately distinguished the museum as one of the premier museums for photography in the world.

The Halls were also passionate collectors of African art, and regularly loaned objects to the museum from their cherished collection. In 2010, Don and Adele gifted seven extraordinary works of African art to the Nelson-Atkins in celebration of the museum's 75th anniversary.

Hall's contributions, both personal and professional, will continue to inspire future generations of museumgoers and Kansas Citians.



Above: Donald J. and Adele Hall in their home; Right: Hall among the sculptures in Noguchi Court



Financials

A Letter from the CFO

Thanks to the support and contributions from friends like you, I am happy to share the results of another extraordinary year at The Nelson-Atkins Museum of Art. The balanced operational budget for the museum’s fiscal year ending April 30, 2025 was \$36.5 million.

The year produced standout fundraising, a record for membership contributions, and continued growth in earned revenues, buoyed by museum store sales during *Hokusai*, and event rentals. These stellar ongoing efforts, combined with the community’s excitement for the museum’s international architectural competition, led the museum to end the year with balanced operation actuals of \$39.5 million.

A debt of gratitude is owed to our volunteer leaders in the Finance, Investment, and Audit Committees. These committees provide critical financial oversight and advice throughout the year. This leadership is key to the museum’s sustainability. The Finance Committee reviews budgets and monitors operational results throughout the year. The Investment Committee is responsible for the oversight of the museum’s investment performance and works closely with the investment advisory team to offer recommendations to the Board of Trustees regarding investment policy, including asset allocation. The Audit Committee recommends the engagement of a firm for audit and tax preparation services, the issuance of reviewed audit results, and filing of reviewed tax returns to the Board, for their approval. The time and expertise these individuals dedicate to the success of the museum is deeply appreciated.

Thanks to each of you for helping the Nelson-Atkins provide another year of vibrant exhibitions and engaging programming for our entire community.

All the best,

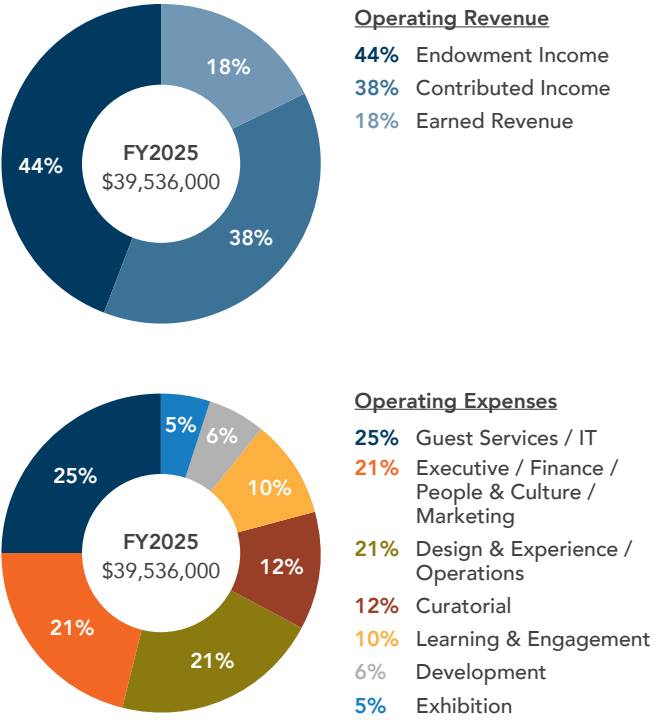


Tammy J. Bluhm, CPA
Vice President, Finance & Chief Financial Officer

2024 – 2025
BOARD OF TRUSTEES

- Evelyn Craft Belger, Chair
- Sandra Lawrence, Treasurer
- Neil Karbank, Secretary
- Alejandro Sánchez Alvarado
- Ann Baum
- Pete Browne
- Susan Chambers
- Ramin Cherafat
- Valerie Chow, M.D.
- Paul DeBruce
- Tim Dunn
- Andrea Feinberg, M.D.

- Scott Francis
- Bill Gautreaux
- Rick Green
- Lewis Gregory
- Don Hall Jr.
- Shirley Bush Helzberg
- William Lyons
- Greg Maday
- Steve McDowell
- Leo Morton
- Mark O’Connell
- Marny Sherman
- Kent Sunderland



Membership

as of April 30, 2025

Friends of Art

COUNCIL MEMBERS

- Carmelita Bahamonde
 - Elizabeth Berkshire
 - Kelly Bunch
 - Nova Clarke
 - Melissa Coleman
 - Shawnalee Criss Petty
- Stephanie Davis
 - Rhonda Dolan
 - Heather Eilers
 - Emily Haas
 - Ericka Jane Howill
 - Travis Jackson
- Addison Reed
 - Kristen Roach
 - Val Rusgis
 - Bradley Sorenson
 - Sally Urdang
 - Alyssa Vargas
- Susanne Eberle Watson
 - John Wingert
 - Sierra Wood

14,910
households

Society of Fellows

BOARD OF DIRECTORS

- Kelly Lynn Anders
 - Daniel Blegen
 - Diane Botwin
 - Gretchen Calhoun
 - Tom Corbin
- Margaret Dakan
 - James Hall
 - Russell Jones
 - Kim Klein
 - Stephanie Lawrence
- Thomas Lin
 - Corliss Miller
 - Janet O’Bannon
 - Patricia O’Dell
 - Michael Orozco
- Susan Pingleton
 - Anne Riker Powell
 - Mary Ann Powell

742
households

Business Council

BOARD OF DIRECTORS

- Robert Aschentrop
 - Rachel Audsley
 - Andrea Becker
 - Ann Boldt
 - Lynn Carlton
 - Jay Currie Campbell
- Tristan Duncan
 - Cathy Groves
 - Katie Hall
 - Suzy Hall
 - Trevor Hoiland
 - Sara Holmes
- Linda Lenza
 - Hans Nettelblad
 - Kiana Raab
 - Colleen Roberts
 - Kevin Rooney
 - Kirstin Salzman
- Gino Serra
 - Anna Simpson
 - Darcy Stewart
 - Bill Stueck
 - Sara Swadley
 - Chelsea Templeton

96
member organizations

William Rockhill Nelson Society

May 1, 2024 – April 30, 2025

“One Sunday, a college friend brought me to the Nelson. The art was good, but it was so quiet. Fast forward 50 years and everything has changed. We have the Bloch Building. We celebrate different cultures with annual festivals and welcome families of every size, shape, and color. When I was deciding how I could give back to my adopted home of Kansas City in my trust, the Nelson was immediately on my list.”

Katie Allison, William Rockhill Nelson Society member

The William Rockhill Nelson Society celebrates the extraordinary donors who ensure the future of the museum through estate gifts. We are honored that they have chosen to create a legacy at the Nelson-Atkins. Thank you!

- | | | |
|--|---|---------------------------------------|
| • Katie Allison | • Richard and Lora Cox | • Carol Hudson |
| • Brent and Wendy Anderson | • Una Creditor | • Lawrence and Elizabeth Hunter-Blank |
| • Frances Atkeson | • Michael Dachenhausen | • Christina Ivers and Ron Scrogam |
| • Mary and Alan Atterbury | • Frank and Elizabeth Daniels | • Larry and Gretchen Jacobson |
| • George and Theresa Barton | • Barbara Eagleton | • Sandra Kelly |
| • Christopher Beal and Timothy Van Zandt | • Ellen Feldhausen | • Marcia Kenley |
| • Gary and Connie Becker | • Janet Fisher | • Florence Kline |
| • Kristin Beery | • Francie Flynn | • Herbert and Nancy Kohn |
| • Robert Bina | • Mark Foreman and Stephen Mankowski | • Judy and Alan Kosloff |
| • Robert and Barbara Bloch | • Ann Friedman | • Molly Levitt |
| • Thomas Borkovic | • Larry and Maureen Gamble | • Jeanne Levy |
| • Sandra Bowlby | • Peter and Barbara Gattermeir | • Bob Lunn |
| • Joyce Burner | • Sheryl Geisler | • Jack and Ann Mahurin |
| • Charles Bush and Calvin Lau | • Edward Goldstein and Rachel Krantz | • Alan and Joan Marsh |
| • Kay and John Callison | • Lillian Gonzalez-Pardo and Manuel Pardo | • Joseph and Jennifer Marsh |
| • Dori and Byron Canady | • Lewis Gould | • Margot Matteson |
| • Casey and Barbara Cassias | • Laura Greenbaum | • Marilyn McConnell |
| • Valerie and Scott Chaloud | • Julie Haas | • Carroll McCorkle |
| • Karen Christiansen and Thomas Phillips | • Shirley and Barnett Helzberg Jr. | • P. Alan McDermott |
| • James Churchill and Ruth Leiter | • Robert Hiller | • Mark McDowell |
| • Barton Cohen | • Irvine and Ellen Hockaday | • C. Patrick and Martina McLarney |
| | | • Richard and Misty McNally |

Society of Fellows

May 1, 2024 – April 30, 2025

PRESIDENT CIRCLE

- | | | | |
|--|------------------------------------|-------------------------------------|-----------------------|
| • Ann Baum | • Nancy and Rick Green | • Neil Karbank and Gretchen Calhoun | • Kent Sunderland |
| • Evelyn Craft Belger and Richard Belger | • Don Hall Sr. | • Bill and Sara Morgan | • Judith Tharp |
| • Paul DeBruce and Linda Woodsmall-DeBruce | • Don Hall Jr. | • John and Marny Sherman | • Todd and Emily Voth |
| | • Shirley and Barnett Helzberg Jr. | | |

DIRECTOR CIRCLE

- | | | | |
|-----------------------------------|-------------------------------------|-------------------------------|---|
| • Mary and Alan Atterbury | • Owen and Lynne Buckley | • Bill and Christy Gautreaux | • Mark and Lynne O'Connell |
| • George and Theresa Barton | • Andrea and David Feinberg | • Gregory and Elizabeth Maday | • Alejandro Sánchez Alvarado and Tatjana Piotrowski |
| • A. Joseph and Jeanne Brandmeyer | • J. Scott Francis and Susan Gordon | • Lewis and Susan Nerman | • Hannah Snider |
| | • William Frick | | • Anonymous |

CURATOR CIRCLE

- | | | | |
|--|-----------------------------|--|-------------------------------|
| • Lynn Adkins and Linda Lighton Adkins | • Ashley and Ramin Cherifat | • William and Peggy Lyons | • Chasitie and Michael Walden |
| • M. Lynn Badaracco and Dwight Quiring | • David and Dee Dillon | • Jeff and D'Arcy Maddox | • Matthew and Chelsy Walker |
| • Taylor and Rebekah Bennett | • Jon Gray and Valerie Chow | • Teresa Meagher and T. Bradley Manson | • Sarah Ye |
| • Pete Browne and Julie Walker Browne | • Amy and Jeff Hargroves | • Virginia Miller | |
| • Thomas and Shelley Cartmell | • Irvine and Ellen Hockaday | • Stephen and Erin Mos | |
| | • Lisa Krigsten | • Stanley Riemann | |
| | | • William and Marilyn Taylor | |

“Our experience with The Nelson-Atkins Museum of Art has grown and changed as my family has grown and changed. The kids started with Saturday morning art classes, and now the museum is their must-visit stop when they are back in town. It truly is a world-class experience that is both consistent and ever-changing.”

Dan Blegen, Society of Fellows member

LEADERSHIP CIRCLE

- | | | | |
|-----------------------------------|---------------------------------------|---------------------------------|--------------------------------------|
| • Kimberly and William Aliber | • Tom and Susan Corbin | • Jonathan and Nancy Lee Kemper | • James Ralstin and Rosemary Howlett |
| • Jeffrey and Susann Anthony | • Katherine DeBruce | • John and Amy Kmetz | • Sandy and Randolph Rolf |
| • Perry and Kathryn Atha | • Tristan and Timothy Duncan | • Lois Lacy | • Randell Sedlacek and Mary Ventura |
| • Lee and Ellen Baty | • Diana and Joseph Eisenach | • Eleanor and David Lisbon | • Zachary Shafran |
| • Daniel and Christine Blegen | • Robert Epsten | • David and Tracy Lockton | • Margaret Silva |
| • Thomas and Mary Bloch | • Michael Fields | • Loretta Loftus | • William and Sandra Snyder |
| • David Booth | • Trever Frickey and Todd Brezinka | • Michael and Linda Lyon | • H. Wayne and Melanie Thompson |
| • Stephen and Susan Bubb | • William Fromm and Jackie Hadl-Fromm | • Jennifer Maassen | • Elizabeth Tinsman |
| • J. Grant and Wendy Burcham | • J. Peter Gattermeir | • Lorraine Martin | • Clifford and Carol Trenton |
| • Patricia and Candelario Carmona | • Peter Goulet | • A. Ford and Christine Maurer | • Robert and Louise Tritt |
| • Valerie and Scott Chaloud | • Jean Green | • Thomas and Jean McDonnell | • James Uhlmann and Amy Middleton |
| • Richard and Lyndon Chamberlain | • Lewis and Laura Gregory | • Molly McGee | • Thomas and Deborah Ward |
| • Lorry Chapman and Nancy Patchak | • Michael and Marlys Haverly | • Daphne Muchnic | • John and Annie Zander |
| • Charles and Virginia Clark | • John and Sharon Hoffman | • Ramón and Sally Murguía | • Sophia Zetmeir |
| • Joan Cooke | • Carol Hudson | • Douglas and Dana Nelson | • Anonymous |
| | • Jeffrey and Aarti Judd | • Debra and Allen Parmet | |
| | • Marcia Karbank | • Jeff and Tonya Poe | |
| | • Basil and Sue Kelsey | | |

COLLECTOR CIRCLE

- | | | | |
|------------------------------------|--|-------------------------------|---------------------------------|
| • Lindsay Abbott and Wayne Field | • Daniel and Ellen Bolen | • Janet Cinelli and Eric Ryan | • Christopher and Jill Deppe |
| • Adam and Sarah Alli | • Diane Botwin and Mike Vessels | • J. and Candy Clevenger | • Katherine Dold |
| • Kelly Lynn Anders | • Kevin and Jodee Bowen | • Greyson and Elle Clymer | • Kevin Dunn and Bob Legler |
| • Meredith and Jon Angrist | • Mark Box | • Barry and Suzanne Cooper | • Terry and Peggy Dunn |
| • David and Lauren Atterbury | • Barrett and Cheryl Brady | • James and Ellen Copaken | • David and Amy Embry |
| • William Barr and Kim Rock | • John and Bridget Brandmeyer | • Bunni and Paul Copaken | • George Enders and Sally Ling |
| • Jonathan and Sarah Baum | • George and Leslie Brett | • Rachael and Kanon Cozad | • Christopher and Beth Eperjesy |
| • Nathan Beyer and Janice Boughner | • Robert and Mary Jo Brown | • Erica and Lorin Crenshaw | • Bradford and Ginny Epsten |
| • Robert and Barbara Bloch | • Dori and Byron Canady | • Robert Cross | • Allen and Shelly Erskine |
| • Kenneth and Lisa Block | • Pati Chasnoff | • Teal and Margaret Dakan | • Jake and Rachel Falcon |
| | • Dennis Cheng | • Richard and Cheridah Davis | • Karen and Paul Fenaroli |
| | • Karen Christiansen and Thomas Phillips | | |

- | | | | |
|---------------------------------------|---------------------------------------|---|--|
| • Jack and Pella Fingersh | • David and Demi Kiersznowski | • Thomas and Lisa Murray | • Myron Sildon and Doris Hamilton |
| • Trevor Flannigan | • Kim Klein | • Courtney and John Nelson | • Clarence Simmons |
| • Francie Flynn | • Charles and Lynette Koester | • Missy and Jim Neville | • Sandee and Greg Smith |
| • Bradley and Theresa Freilich | • George Kouba | • Barbara Nicely | • Charles and Susan Spaulding |
| • Frank and Sondra Friedman | • Constance Latshaw Jaffray | • Donna and Michael Nill | • William and Susan Stannard |
| • Blair and Matt Gogel | • Barbara and Thomas Laughlin | • Kathy Nordhus | • Jonathan and Meredith Sternberg |
| • Laura Greenbaum | • Sandra and Willie Lawrence | • Crystal O'Dea and William Weaver | • Jim and Mary Stilley |
| • Allen and Gail Gutovitz | • Jonny Lefko | • Beth Oller | • Matthew and Mandi Strange |
| • James Hall | • Joseph Levin and Suzie Aron | • Deborah and Michael Orozco | • Quentin and Chelsea Templeton |
| • Richard Hamilton | • Thomas Lin and Rachel Hayes | • Matthew Peddie and Jessica Heimes | • James and Kristal Thompson |
| • Emily Hansen | • Beth and Gregg Lombardi | • Margi and W. Keith Pence | • Thomas and Jill Turner |
| • Robert and Beverly Hechler | • Janet Long | • Leonard Popplewell | • Patricia Uhlmann |
| • Jane Henney and Robert Graham | • John and Daisy MacDonald | • Stacy and William Pratt | • John Wagner and Deborah Gifford |
| • Elizabeth and John Hjalmarson | • Teresa Magruder | • Robert Rebori | • Myron and Nicole Wang |
| • Robert Hoffman | • B. and Connie Mangiaracina | • William and Amy Reynolds | • Laura Weber Lutz |
| • David and Anne Hollond | • Anne Manning and Lisa Soukup | • Gary and Anita Porte Robb | • Sarah Wells and Jason Vadhan |
| • Kenneth and Kristin Huber | • Katherine Martin | • Mallory Robins | • Jerry White and Cyprienne Simchowitz |
| • Randall and Doranne Hudson | • Scott and Jennifer McCreight | • Tracy and Joel Rosenthal | • Andy and Toma Wolff |
| • Ashley Hutcheson | • Michael and Lee Meurer | • Lawrence and June Rouse | • Laura Rachele Worrall and Darrel Smith |
| • Anita Ihuwan | • Janet and Phillip Miller | • Lisa Ruisch | • Mark and Emily Zastrow |
| • Eric Thor and Alison Jager | • Marshall Miller and Kathleen Kilway | • Rebecca Sandring and Dennis Boatright | • Julián and Tasha Zugazagoitia |
| • Richard and Sandra Jones | • Rebecca Minion | • Scott and Nancy Saylor | • Anonymous |
| • Susan and Russell Jones | • James and Virginia Moffett | • Vicki and Stanley Sharp | |
| • Victoria and Michael Kanaley | • Susan Morgenthaler | • James and Connie Shay | |
| • Kelly Kapp | | • John Sheets and Adalynn Stevenson | |
| • Mary Beth Kapp | | • Cindy Shelby | |
| • Julie Kemper Foyer and Michel Foyer | | • Tracy and Sara Shelby | |

PATRON CIRCLE

- | | | | |
|----------------------------------|---------------------------|---|--------------------------------------|
| • Kerry and Matthew Adam | • Lauren Allen | • Louise Liepold | • Terry Anderson and Michael Henry |
| • John and Ellen Aisenbrey | • Mark and Louise Allen | • Janis Andersen | • Matthew Apfel and Jacqueline Reses |
| • Tony Albracht and Michelle Pal | • Mark and Jennifer Allen | • Annie and Jeffery Anderson | • Craig Armstrong |
| • Don and Christine Alexander | • Steven and Jeri Allison | • Craig and Christine Anderson Dick and Gloria Anderson | • Richard Armstrong |
| | • Keith and Elizabeth Alm | | • Dorothy Arneson |
| | • Betsy and Jacob Ambrose | | |

- Eliot Arnold and Renee Morrison
- Lillard and DeVette Ashley
- Richard and Barbara Atlas
- Lisa and Wayne Auer
- Mark and Jennifer Austenfeld
- Donald and Margaret Austin
- Sydney Backstrom
- Kelley and James Bailey
- Roopa Bansal
- John and Mary Barlow
- Mary and C. David Barrier
- Tim Barton and Melanie Cohavi
- Ivan and Karla Batlle
- James Batterson and Todd Green
- Chuck and Joan Battey
- Melinda Beal
- Richard Bean and Sandra Castillo-Jackson
- Jonathan Beck
- Bart and Joanie Bergman
- Robert and Elizabeth Berkebile
- Eugene Berkley
- Richard and Sandra Berkley
- William and Maureen Berkley
- Beth and John Berkshire III
- Robert and Phyliss Bernstein
- Irene Bettinger
- Sharon Betzelberger
- Susan and James Birt
- Pamela and Irvin Bishop
- Devin Blackburn
- Nicholas and Clare Blasi
- David and Kay Bleakley
- Bill and Anne Blessing
- Amy Bode and Anthony Marfin
- Richard and Emily Boeshaar
- Kelly and Jaymie Bonavia
- Stephanie and Henry Bond
- A. Michael and Peggy Borkon
- Tracey Bormann Cattarin and David Cattarin
- Heather and Jon Bortnick
- Katharine and Stefan Bossmann
- Robin and Scott Boswell
- Jonathan and Beverly Braatz
- Sarah and Brian Bracco
- Stephane Bradley Cooch and Chris Cooch
- David and Suzanne Bradley
- Francie and Brian Bradley
- Julie and Timothy Brake
- J. and Diane Brent
- Mark Brodkey
- Patrick and Paula Brooks
- Mary Lou Brous
- Lisa Browar
- Carolyn Brown
- Peter and Lynne Brown
- Phillip Brown
- Susan and Scott Brown
- Thomas and Mary Brown
- Beverly Sue Brownlee
- Jack and Fran Brozman
- Gerard and Judy Bukowski
- Deanna and Jeffrey Burns
- Kay and John Callison
- Karen and Garry Calvin
- Clayton Camblin and Kelly Hysong
- Ann Canfield and Stanley Bushman
- Dan Carpenter and Kaye Summers
- Kirk Carpenter
- Kyle Carpenter
- Scott and Sherry Carter
- Casey and Barbara Cassias
- Eric and Rebecca Cathcart
- Bruce and Cathy Cavitt
- Lorece Chanelle
- Richard and Donna Childs
- Nan Chisholm
- Terry Christenberry and Ann Mesle
- Robert Claassen
- Matthew and Rachelle Clair
- Cary Clarke
- James Clarke and Jennifer Svetlecic
- Carl and Elizabeth Cleveland
- Jeanine Cobler
- Steven and Beth Cole
- Andrew Colom
- Martha Comment
- Timothy Cook
- Shelley and Jon Copaken
- Robert and Marcia Corbett
- Betty Ann Cortelyou
- Fred and Lucy Coulson
- Carol and John Cowden
- Patricia Cox
- Karen and John Craft
- J. E. Crawford
- Jeffrey and Carol Crowe
- John and Susan Crowe
- Malcolm and Mary Crowther
- Ellen D'Amato
- Sally and Dave Dannov
- Jennifer Davidner Cattano and Jeremy Cathlina
- Diane Davidner
- Dennis Davis and Evelyn Otsuka Davis
- Lydia Davis
- Chandler Davison
- Mary Deacy
- George and Lynn Devins
- Paul and Kathy Diamond
- Mark and Vicki Dickerson
- Zoë Dictrow
- Peggy Donnellan
- David Donovan
- Eric Dorfman
- Mary Dowd and Jill Burton
- David and Kathy Dowell
- Kathy Dowell
- Bernard and Mary Duffy
- Jess Dugan
- Eileen Duggan
- Peter and Cindy Dunn
- Daniel and Anne Durrie
- Laurie Eck
- Thomas and Georgine Egan
- Claude and Rachel Einstein
- Jen and Derek Elder
- Beth Heineman Eliason
- John and Rosemary Elmore
- Anne and Howard Elsberry
- Lynn Emig and Mike Upchurch
- Jennifer and Warren Erdman
- Robert and Sue Esrey
- William and Michelle Fasel
- Adam and Mia Feldman
- Mike and Melanie Fenske
- Barry Festoff and Shea Gordon-Festoff
- Stephen Figge and Ian Alteveer
- Pamela Fike and Joseph Walker
- Brent Finley
- Marjorie Finley
- Kenneth Fligg
- John and Jeanne Fox
- Michael and Rebecca Furlong
- Charles and Evelene Gallardo
- Carolyn Gasser
- Douglas and Ann Ghertner
- Karen Gibbons
- Archie Gobber and Laura McGrew
- John and Ellen Goheen
- David Goldberg and Ann Darke
- Geraldine Goldberg
- Edward Goldstein and Rachel Krantz
- Lillian Gonzalez-Pardo and Manuel Pardo
- Donna and Robert Goodwin
- Andrew Gordon
- Tracy Gordon
- Erin and Steve Gorny
- J. Gary and Pam Gradinger
- Norman and Doreen Greczyn
- Sally Groves
- Ary Guerrero and Calvin McConnell
- John and Innes Hale
- Casey and Paula Halsey
- Adam and LaVon Hamilton
- Laura and Charles Hammond
- Lyndse and Prentice Hanes
- Saralyn Hardy
- Jerry Harrington
- Sara and Scott Harris
- James Hebenstreit
- Barret and Susan Heddens
- Mark and Lisa Heitz
- Carl Helmstetter and Mary Corneil
- Charles Helzberg and Sandra Lynn Baer
- Reesa and John Helzberg
- Clarke and Mary Henry
- Donna Henry
- Joseph and Patricia Henry
- Joly Herman and Pat Curnow
- Leslie Herman
- Michael and Karen Herman
- Jeanette and Kevin Prenger
- James Heryer
- Richard Herz and Fran Lancaster
- Anne Hickok and Phillip Charlton
- Lisa Hickok
- Kimbrough and Edward Higgins
- Thomas and Paget Higgins
- Daniel and Jilinda Hinrichs
- Matt Hoffman
- Paul and Amy Holewinski
- John and Karen Holland
- Amanda and Bryce Holt
- Kathleen and Richard Honan
- Ericka and James Howill
- David and Mignon Hughes
- Steven and Katherine Hughes
- John and Mary Hunkeler
- Sher Hurlburt
- Ann Hyde
- Lynn and Bill Intrater
- John and Jennifer Isenberg
- Blair and Brad Jackson
- Caleb and Julia Jackson
- John and Frances Jackson
- Roger and Sandra Jackson
- Travis Jackson
- Niles and Lindsay Jager
- Paul and Lynsey Jager
- George and Tamara James
- MaryLou James and James C. Taylor
- Arthur and Frances Jenny
- Bradford Johnson
- Diane and Robert Johnson
- Lynn and Jacqueline Johnson
- Richard Johnson
- Stephen and Bev Johnston
- Linda and Topper Johtntz
- Carol Ogden Jones
- Christopher Jones and Aaron Brandenburg
- Kathleen Jones
- Ronald and Nancy Jones
- Charles Joss
- Harvey and Michele Kaplan
- Benjamin Karbank
- Rosemary Karp
- Allan Katz and Nancy Cohn
- Ward and Donna Katz
- Charlotte Kemper Black and Chris Black
- Mary and John Kilroy
- Allan King and Nancy Bean
- Judy Kirk
- Michael and Julie Kirk
- Florence Kline
- Rozanne Klinzing
- Jane Knapp
- Douglas and Kathleen Knop
- Hazel Knutson
- Constance Koester
- Paul and Suzanne Koontz
- Linda and William Kornitzer
- William and Regina Kort
- Susan and Douglas Krebs
- Aaron and Jessica Kroll
- Walker La Brunerie
- Linda La Piana and Michael Trask
- Michael and Christine LaHood
- Damian Lair
- Cynthia Lamas
- Robert and Victoria Lamkey
- David and Catherine Larrabee
- Stephanie and Jim Lawrence
- Constance Lawton and James Yoder
- David and Megan Leathers
- Simon Craddock Lee
- Joel and Sandy Leibsohn
- Jeanne Levy
- May Liang and James Lintott
- Kristen Liebert and Greg La Rue
- Frederick and Laura Lintecum
- Mary Lockton and Michael Murphy
- Frank Loeffler and Phyllis Carozza
- Fred and Carol Logan
- Donald Loncasty and Charles Bruffy
- Christopher and Angie Long
- Ida Long
- Jay and Frances Longbottom
- William and Barbara Lowenstein
- Jack and Ann Mahurin
- James and Colette Majerle
- F. Lee and Lindsay Major
- James Malouff
- Noelle and David Manica
- Helen and Graham Marcott
- Betty Jo Marder

- Anita and Bary Marquardt
- Alan and Joan Marsh
- Kimberly Masteller and Donovan Dodrill
- Michelle Matthews
- Carl and Lee McCaffree
- Lucie McCallum Black
- Carol and Dan McCartney
- Darlene McCluskey
- Laura McConnell
- Ann McCray
- P. Alan McDermott
- Jay McDonald
- Stephen and Mary Anne McDowell
- Joan McGee
- Susan and Kevin McGreevy
- Doug and Nina McKenna
- C. Patrick and Martina McLarney
- Siobhan McLaughlin Lesley
- Richard and Misty McNally
- Marilyn Melcher
- Freda Mendez Smith and Robert Smith
- Lenore Meng
- Barbara Messner
- John and Jacqueline Middelkamp
- Kathy and Bill Migneron
- Mary Lynn and Kamal Mikhail
- Edward Milbank
- Sharon Milens
- Ann Miller
- Douglas and Susan Miller
- John and Ellen Miller
- Larry and Corliss Miller
- Patricia Miller
- Stephen and Susan Miller
- C. Michel Minor
- John and Margaret Mitchell
- Marilyn and John Mitchell
- Allan Mohess
- David and Kathleen Moore
- Tim and Diana Moormeier
- George and Babs Morris
- Donald Mrozek
- Walter and Daisy Muff
- Jhulan and Jyoti Mukharji
- Moira Mulhern
- Julia and Mark Mullinix
- Emma Nakakuki
- Stacie and Kevin Needham
- Barbara Nelson
- Nicole and Michael Nelson
- Rick Nelson and Carolyn Gibbs
- Roger Nelson
- Ashley and Greg Nerman
- Fred and Paula Neuer
- Mark Neustrom
- F. Peter Newcomer
- Charlie and Kay Newell
- Henry and Cara Newell
- Meggan Newland and Jon Henry
- Steve and Marianne Noll
- Richard and Britton Norden
- Glenn North
- Regina Nouhan and John Eck
- Edward and Chris Null
- Janet O'Bannon and William Kalt
- Daly O'Brien
- Jean O'Brien
- David and Sara O'Connell
- Patricia O'Dell and Todd Schulte
- Alejandro and Mary Ogata
- Marilyn O'Hearne
- Charles and Jane Olsen
- Jay and Rita Oltjen
- Richard and Sharon Orr
- Michael and Natalie O'Shaughnessy
- R. Lyman and Sally Ott
- Michael Otto and Patricia Moore
- Richard and Virginia Owen
- Florence Pack
- Louis and Joyce Pack
- Steve and Karen Pack
- Marta Padula
- Major and Judy Park
- Geoffrey and Betsy Parker
- John and Susan Parker
- Carolyn and William Parkerson
- George and Linda Parkins
- Arthur and Nancy Parks
- Anne Patterson
- David and Rebecca Paulsen
- Frank and Isabel Paxton
- Thomas and Janice Pearson
- Byron and Kate Pendleton
- Mary and John Petrow
- Leslie Pfriem
- John and Diane Phillips
- Lynn Piller
- Susan Pingleton
- Mary Ann Pinkerton and Debbie Kimball
- Kevin and Janet Pistilli
- Linna and K. Craig Place
- Stephen and Martha Platt
- Heather and Timothy Pluard
- James Polsinelli
- William and Susan Popplewell
- Charles and Susan Porter
- Walter and Jon Porter
- Joseph and Lynn Poskin
- David and Anne Riker Powell
- George and Wendy Powell
- Nicholas and Mary Ann Powell
- Peter and Cappy Powell
- Sarah-Allen Preston
- David Preston
- Merry Quackenbush
- Kurt Rasmussen
- Nicolle and Harley Ratliff
- G. Sullivan Read and Maureen Scribner-Read
- Jerry and Patty Reece
- Bruce Reed and Page Branton Reed
- William Reed
- Bob and Ann Regnier
- Gerald and Camille Reid
- Mary and Stephen Reintjes
- Douglas and Jill Reitz
- Grant and Ann Renne
- David and Linda Richards
- Boyce Richardson
- Louis and Leah Ridgway
- Dennis and Palle Rilinger
- George and Linda Robbins
- Leonard and Julie Rodman
- Rob and Doris Rogers
- Margaret (Peggy) and Kevin Rooney
- David and Connie Ross
- Joshua and Ann Rowland
- Sarah Rowland
- Lucy Rupf and Alan Feldmeier
- David and Jackie Russell
- Jack and Jenney Ryan
- Tom and Cynthia Ryan
- Carmen Sabates
- Martha Salinas and John Gravely
- Kelly Sapp-Summers
- Daniel and Miriam Scharf
- Charles and Lisa Schellhorn
- Cynthia Scherb
- Michael and Katherine Schlem
- Lisa and Charles Schmitz
- C. Fred and Barbara Schoell
- Mark and Janice Schonwetter
- James and Katherine Schorgl
- Stephen and Dolores Schroff
- Thomas Schult and Margo Soule
- Michael and Cathy Schultz
- Betty Scott
- Frank and Jolyn Sebree
- James and Stephanie Seigfreid
- Laura Sereduck
- Chris and Mae Sevedge
- Ginny and William Shackelford
- George and Lisa Shadid
- Lori and John Sherk
- Kathryn Shields and Philip Cardarella
- Leland and Jill Shurin
- Myra and Lester Siegel
- Ashley and Chase Simmons
- Donald and Betty Simpson
- Karen and Gary Skillett
- Heather and Clint Slusher
- Chris and Emily Smart
- Dianna Smith
- Geoff and Catherine Smith
- Scott and Kathy Smith
- Frederick and Elizabeth Solberg
- Charles and Jeanne Sosland
- Neil and Blanche Sosland
- Sarah Sosland and Benton Smith
- Deborah Sosland-Edelman and Alan Edelman
- Shirley Spiegel
- Barbara Spilker
- Peter and Whitney Stadler
- James and Alicia Starr
- Mina and LaMar Steen
- Amanda Stone
- Nina Stricker
- Liza Strieby
- Jack and Barbara Stuber
- William and Jo Ann Sullivan
- John and Ann Sundeen
- Susan Susz
- Thomas and Deborah Swenson
- Sven and Julie Sykes
- Joseph and Judi Tauber
- Darren Taylor
- Michael and Nancy Thiessen
- R. and Joyce Thompson
- Eden and David Thorne
- James and Leslie Tomlinson
- H. Guyon Townsend
- Ann Trask
- Steven and Debra Trenton
- Bryceton Trew
- Oscar and Ratana Tshibanda
- Paul Turner
- Paul and Elizabeth Uhlmann
- Ann Upjohn
- Kirby Upjohn
- John and Sandra Valentine
- Gail and Charles Van Way
- Ingrid and Rob VanBiber
- Russell and Mary Vandekauter
- Kirk and Barbara Vaughan
- William and Jean Wagner
- Karyn Walden-Forrest and Dave Walden
- Dale Walker
- Shawn and Jesus Walker-Salas
- James and Mary Jo Ward
- Michael and RayeAnn Ward
- Susan Warshawsky
- Steven and Eliza Waterman
- Linda Watson
- Maurice Watson
- Sam and Susanne Watson
- Michael and Jamila Weaver
- James and Sarah Weitzel
- Tobias and Kristin Welo
- Katherine and Clyde Wendel
- Robert and Sally West
- Frank and Helen Wewers
- Leslie and James Whitaker
- Michael Whitsitt
- Reeves Wiedeman
- Ted and Molly Wiedeman
- Ann and James Wilkinson
- Pamela and Thomas Willard
- Brian Williams
- Cheryl and Bernard Williams
- Jerry and Debbie Williams
- Stephen and Marta Williamson
- Mindy and Josh Wilson
- Tom and Jan Wilson
- Elizabeth Winetroub
- Garrett and Katelyn Wiseman
- W. and Hillary Wolbach
- William Wolbach
- Ronald and Marilyn Wollard
- Heather Wong
- Patricia and Thomas Wood
- Walker Woods and Jennifer Chapin
- Gerald Woolsey
- Fred and Helen Wooster
- Steve Yang and Mi-Ae Hur
- John and Barbara Yeast
- Kevin Yoder and Brooke Robinson Yoder
- Victoria Zaragoza-Shipp
- Mark Zimmerman
- Karl and Beth Zobrist
- Beth and Bill Zollars
- Anonymous

Business Council

May 1, 2024–April 30, 2025

CHAIR



PRESIDENT



DIRECTOR



LEADER



Business Council guests enjoy the popular companion exhibition of *Hokusai: Waves of Inspiration* from the Museum of Fine Arts, Boston

“Supporting the Nelson-Atkins means supporting expression, creativity, and education, and keeping access to transformative works of art and history FREE to the public. Polsinelli is proud to partner with an institution that does so much for so many in our community.”

Anna Dudenhoeffer Simpson,
Business Council member

CORPORATE PARTNER

- | | | | |
|---|---|---|---|
| <ul style="list-style-type: none">American Century InvestmentsArvest BankBernstein-Rein Advertising, Inc.Blue Cross and Blue Shield of Kansas CityBlueScopeBOK FinancialBryan Cave Leighton Paisner LLPBurns & McDonnellCBRECompass MineralsCountry Club BankCrossroads HotelDesign Resources/Branded Custom SportswearFCS Family OfficeFerrell Capital, Inc.Forvis Mazars | <ul style="list-style-type: none">GenslerGerson Family FoundationGibbens Drake Scott IncGilmore & Bell, PCGlobal PrairieH&R Block, Inc.Helix Architecture & DesignHenderson Engineers, Inc.HNTB CorporationHotel SavoyHunt MidwestIntercontinental Kansas City At The PlazaInternational Architects AtelierJones Development CompanyKansas City ChiefsKansas City Life | <ul style="list-style-type: none">Insurance CompanyKarbank Real Estate CompanyKC CurrentLabconco CorporationLippert Mechanical ServicesMazuma Credit UnionMcCarthy Auto GroupMichael J. Rainen Family FoundationMRIGlobalMultistudioPlatform VenturesPricewaterhouse Coopers LLPProspect Business AssociationRJM & Company, LLCShook, Hardy & Bacon LLP | <ul style="list-style-type: none">SpecChemSpencer Fane LLPStinson LLPStowers Institute for Medical ResearchSuburban Lawn & GardenThe Raphael HotelTito’s Handmade VodkaTnemec Company, Inc.UBS Financial Services, Inc.UMB Financial Corp.US Bank Private Wealth ManagementVMLZimmer Companies, Inc |
|---|---|---|---|

CORPORATE ASSOCIATE

- | | | | |
|--|---|--|--|
| <ul style="list-style-type: none">Charlie HustleCity Barrel BrewingCopaken BrooksEhinger PropertiesGEM Cultural and Educational Center | <ul style="list-style-type: none">Greater Kansas City Chamber of CommerceIMEGInternational Relations CouncilMarlene’s Kaleidoscope | <ul style="list-style-type: none">McQuaid Brothers Remodeling CompanyPackaging Equipment SolutionsPerspective Architecture + Design, LLC | <ul style="list-style-type: none">Rank & Roberts Real Estate, Reese NicholsUniversity of Saint MaryVine Street Brewing |
|--|---|--|--|



A visit to the museum's popular European gallery

A Glimpse Ahead

We look forward to seeing you at these exciting programs and events:

Community Impact Fund Campaign

Nov. 18, 2025–Jan. 15, 2026

More is More: Reinventing Photography Beyond the Frame

Through Jan. 18, 2026

Lunar New Year Festival

Jan. 25, 2026

Painted Worlds: Color and Culture in Mesoamerican Art

Through Feb. 8, 2026

Native American Cultural Festival

March 1, 2026

Passport to India

April 19, 2026

ShuttleCork

April 30–May 1, 2026

Highlights from the Lawrence Lithography Workshop

Jan. 24–July 26, 2026

American Prospects

Feb. 7–Aug. 2, 2026

Personal Best

Through Aug. 9, 2026

Timeless Mucha

April 18–Aug. 30, 2026

Our generous members, community partners, and sponsors make the museum's mission possible. We enjoyed yet another incredible year, thanks to you.

If you'd like to donate to the Nelson-Atkins, email giving@nelson-atkins.org or call **816.751.1278**.